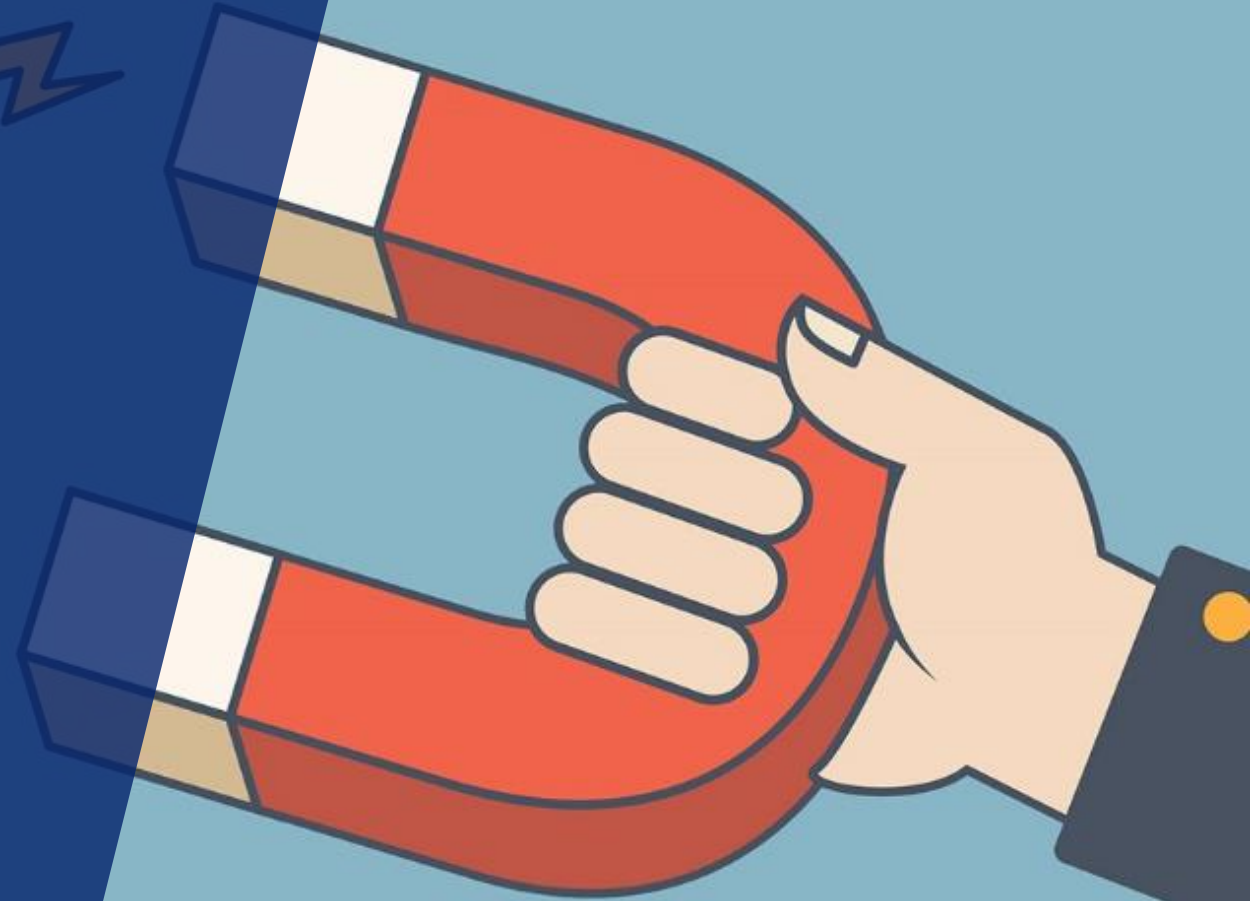


Lead Generation

SOLUTION CENTRE



WilliamReed.

Solution Centre Landing Page

You have booked a Solution Centre campaign for three months
Please find an example of what your landing page will look like on the right-hand side

- 1 Logo**
Dimensions: 120 x 80 pixels (width x height).
File Type: GIF, PNG, JPG – 40 KB max – static image only
- 2 Content**
Please verify if the information used in your Company Profile is accurate as this will be used for your Solution Centre campaign - to do so, you can ask for the link to your Company Profile from the Adops team (Adops@wrbm.com)
If you need to update your Company Profile or you need to create one, please click on the link to the specifications below and send your information to the Adops team
Company Profile Specifications: [Click here](#)
- 3 Form**
Please note that the leads will be collected on the basis of legitimate interest by default

Elements of the Solution Centre Package

Please note that the campaign will start on the 1st day of the chosen quarter even if we are missing some elements from you. Please refer to the below specifications links to make sure you provide us with complete material as soon as possible:

- Wide Skyscraper specifications: [Click here](#)
- Website Special alert Bar specifications: [Click here](#)
- Newsletter Special alert Bar specifications: [Click here](#)
- Newsletter Middle Text Ad 2 specifications: [Click here](#)
- PDF Hosting for Lead Generation: [Click here](#)

The screenshot shows a landing page for 'SUPPLIERS' with the title 'Topic Name Solution Centre'. It features social media icons for Facebook, Twitter, LinkedIn, and Email. A large grey box contains a placeholder for a 'Client Logo' (120 x 80 px), marked with a circled '1'. Below this is a section of blue horizontal lines, marked with a circled '2'. At the bottom of the page, there are four grey boxes, each containing the text 'Client's Lead Generation', with the third one marked by a circled '3'. On the right side, there is a 'REQUEST MORE INFORMATION' form with fields for First Name, Last Name, Email, Phone, Department, Business Activity, Company, Employees, Country, and County, along with a 'SUBMIT YOUR REQUEST' button. A small disclaimer at the bottom of the form states: 'In order for you to receive this content, the above data is provided to BIGG Europe SA, the content producer.' Below the form, there is a 'MORE PRODUCT CATEGORIES' section with a list of categories: Health and nutritional ingredients, Flavours and colours, Dairy-based ingredients, Proteins, and Food labelling.